



Cold and Arid Regions Science Data Center

HiWATER: ASTER Dataset

UUID: f6b9ebda-92d3-4fd9-bbae-88cb8839b429

HiWATER: ASTER Dataset

Abstract

This dataset includes 12 scenes, covering the artificial oasis eco-hydrology experimental area of the Heihe River Basin, which were acquired on (yy-mm-dd) 2012-05-30, 2012-06-15, 2012-06-24, 2012-07-10, 2012-08-02, 2012-08-11, 2012-08-18, 2012-08-27, 2012-09-03, 2012-09-12, 2012-09-19, 2012-09-28.

The data were all acquired around 12:00 (BJT) at Level 1A, i.e., without atmospheric and geometric correction.

ASTER dataset was purchased from Japan Aerospace Exploration Agency (JAXA).

Keywords

Theme: satellite remote sensing, emissivity, ASTER,

Place: the artificial oasis experimental area, Heihe River Basin,

Temporal: 2012, 2012-09-12, 2012-09-19, 2012-09-28, 2012-05-30, 2012-06-15, 2012-06-24, 2012-07-10, 2012-08-02, 2012-08-11, 2012-08-18, 2012-08-27, 2012-09-03,

Discipline: quantitative remote sensing, remote sensing,

Statrum:

ISO 19115 Category

Category: geoscientificInformation

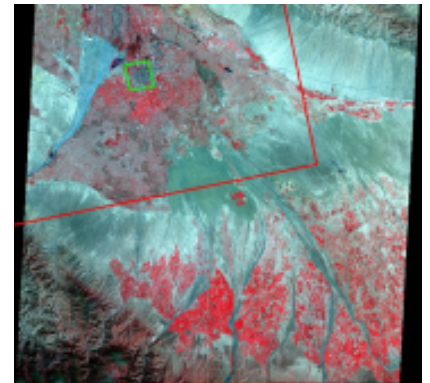
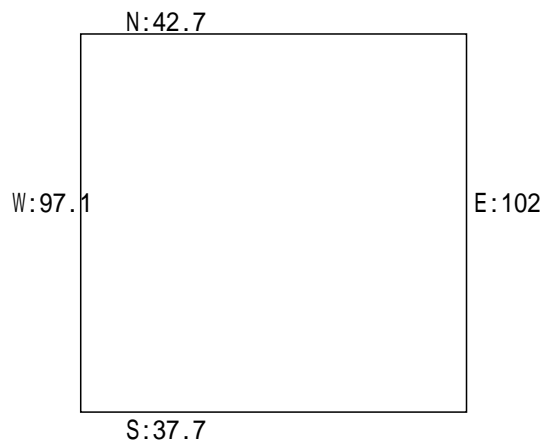
Detail

Project: +proj=longlat +datum=WGS84 +no_defs

Data Volume(MB): 4403.2

Data Format: *.image

Position and Thumbnail



Temporal Range

Start: 2012-05-30

End: 2012-09-28

Citation

Recommended Publications

DOI

Funding

1. National Natural Science Foundation of China : (No: 91125001)
2. National Natural Science Foundation of China : (No: 91125004)
3. National High-tech R&D Program of China (863 Program) : (No: 2009AA122102)

Limitation

1. The dataset is generated from the "Heihe Watershed Allied Telemetry Experimental Research (HiWATER)". User must have a clear statement in the article of the original data source and cite the dataset and papers in the Citation section.

Online Resources

1. <ftp://ftp2.westgis.ac.cn>
2. <http://card.westgis.ac.cn>

Contacts